

Style Vista

CONSTRUCTION

*In our work, we have pride,
Quality is what we provide.
We Build Tomorrow.*





Our process at Style Vista -





Knowing your requirements

Getting to know your requirements will help us to let the two important factors in a space i.e., functionality and aesthetics, meet each other and define you in your space.

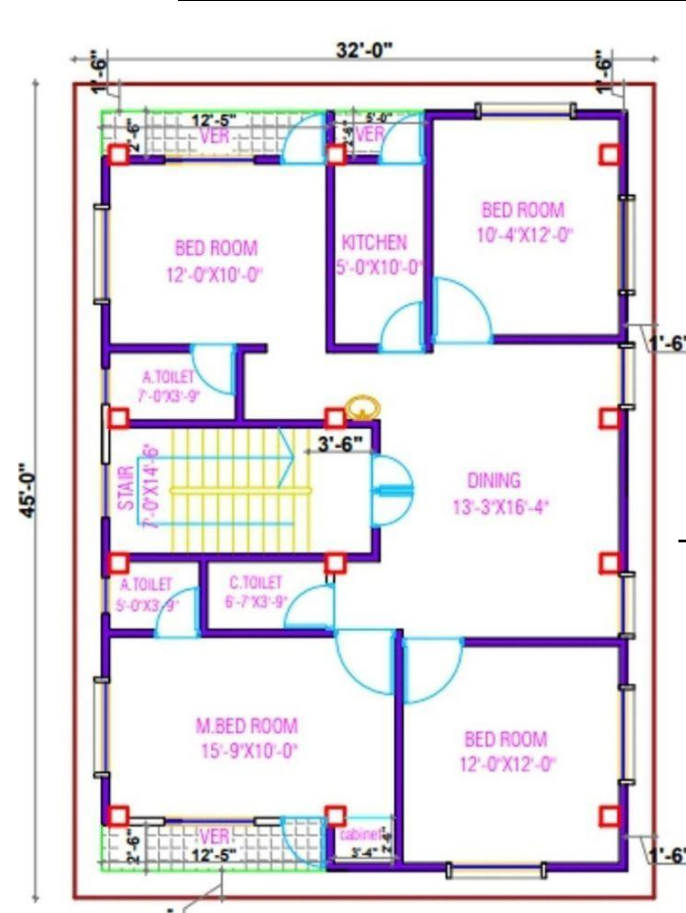




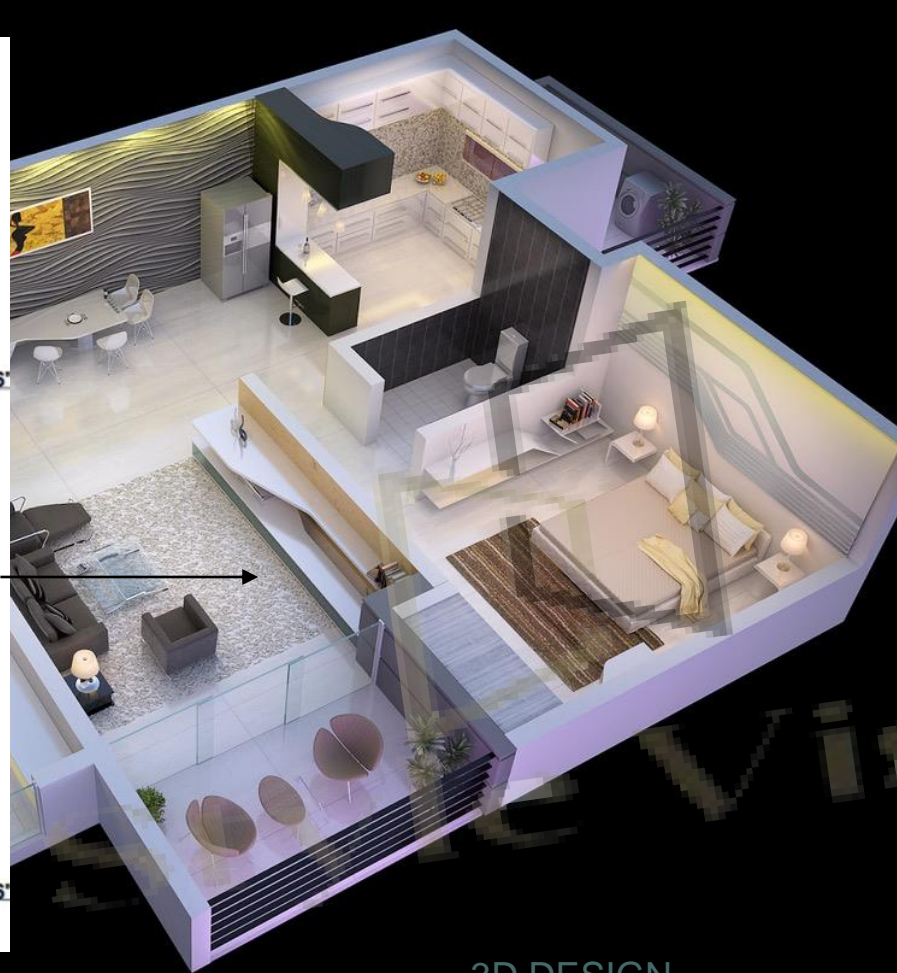
Our first presentation

Any reference pictures from either of our ends would help us understand your style and preference to design accordingly.





FLOOR PLAN



3D DESIGN

Design

- A 3d design will be made according to your requirement in reference to the pictures you've selected in the previous step.
- Any changes after the 1st cut design presentation can be done in this phase.
- It is suggested to finalise the design in about 3-4 meetings such that delivery of the project meets the timeline.





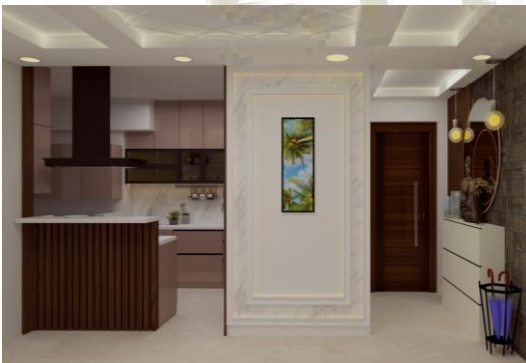
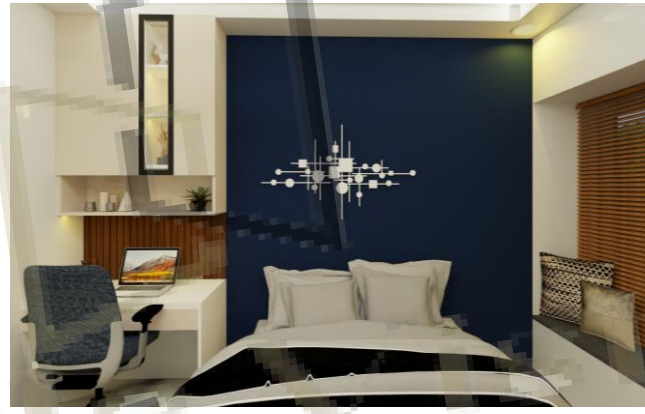
Material selection

- Once the design is finalised, it is now time to proceed with the laminate and other material selection
- Note: No changes will be made in the design after the material selection is done.



Renders

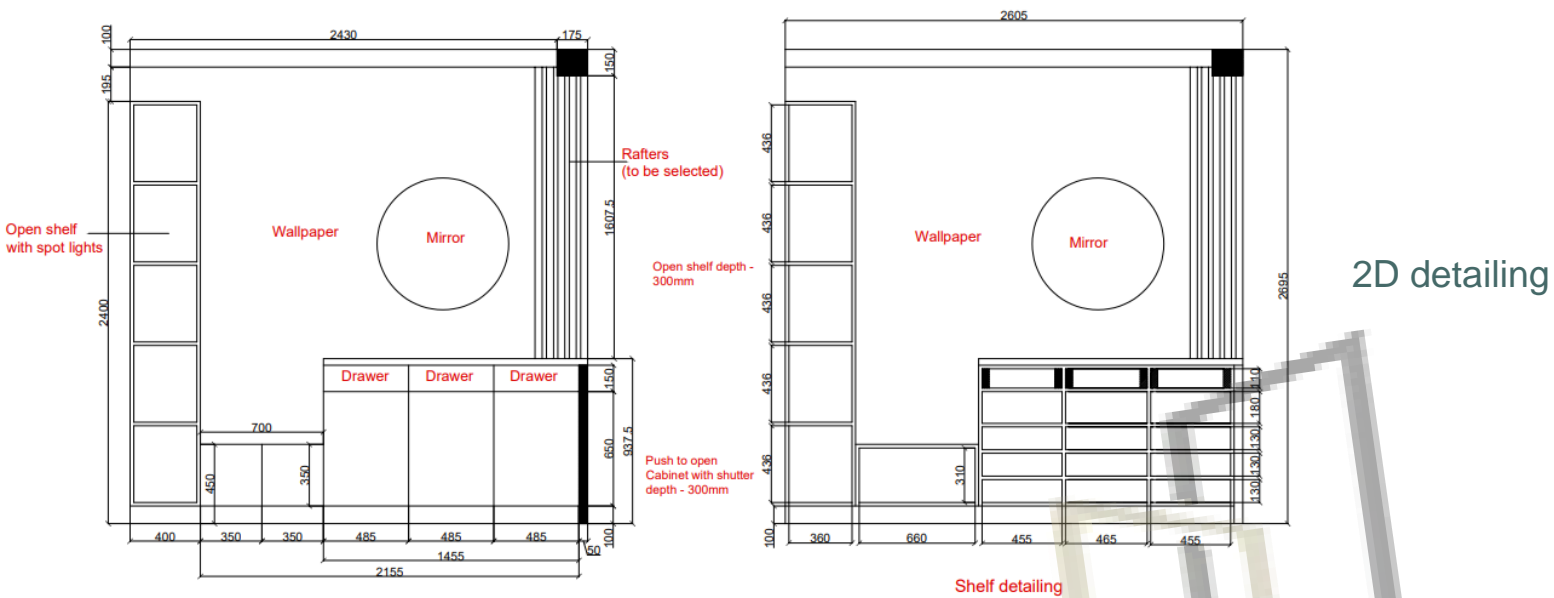
- Selected materials are applied to the design and renders will be taken.
- Here are few renders from our previous projects



Kitchen



FOYER







2D detailing

ACCENT WALL + KITCHEN ENTRANCE PANEL LAMINATES

Laminate details



- 
2136 LG CATANIA OAK
BY MANILAM 1mm LAMINATES
(Entrance panel)
 - 
2616 LG CREMA WHITE
BY MANILAM 1mm LAMINATES
(Accent wall)
 - 
16mm T-PROFILE
 - 
WT 0522
BY WALL TEXTURE, ULTRA
WALLS
(Accent wall)
- RAFTERS TO BE SELECTED

Final pdf

A final pdf with the rendered image, 2d detailing file and laminate details will be provided so that the design can go into execution.

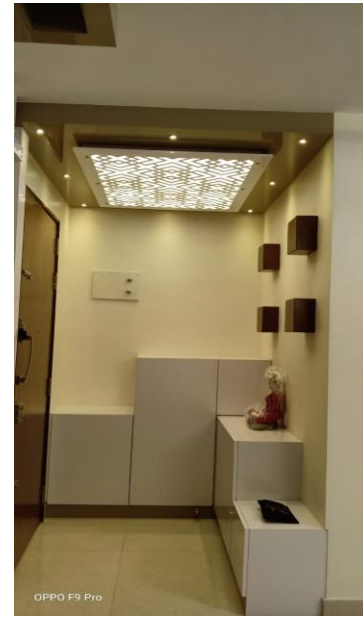




Production + Execution

- Material will be procured according to the final design and the factory work will be started.
- Once the factory work is completed, it will be executed in the site.
- Note: A minimum of 45 days will be taken to hand over the site from the day of execution.

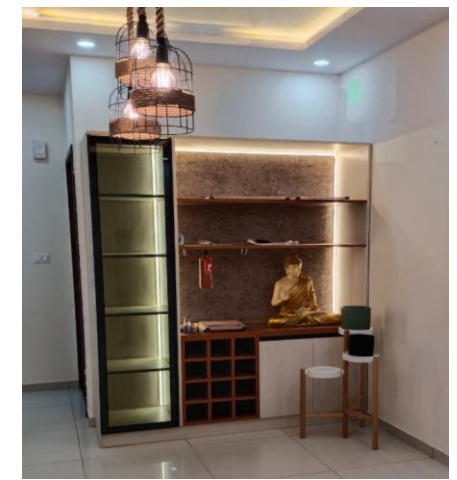
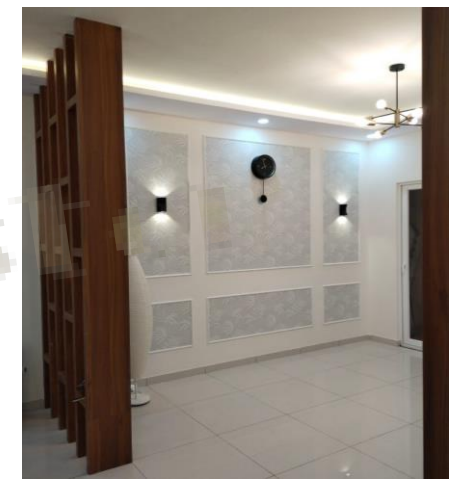
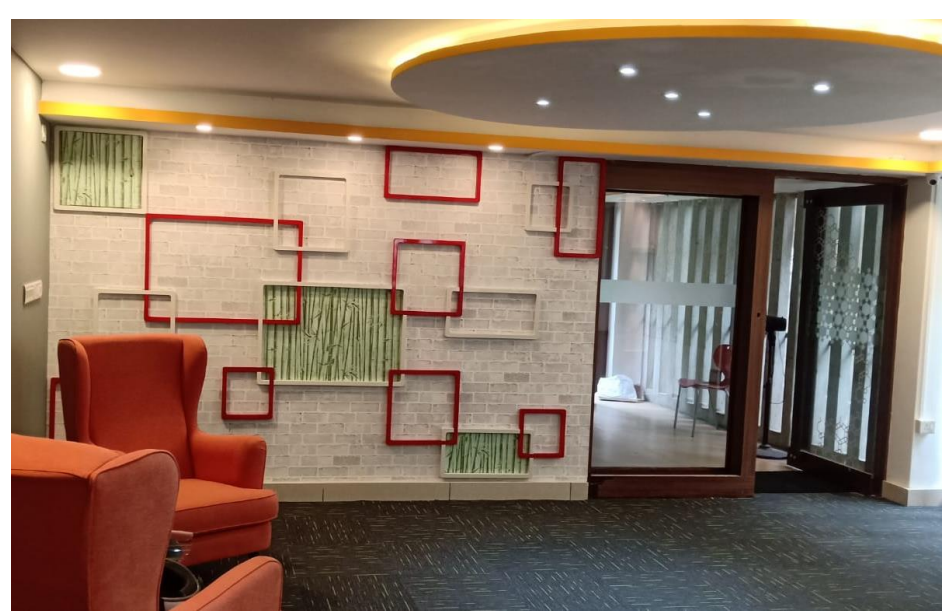
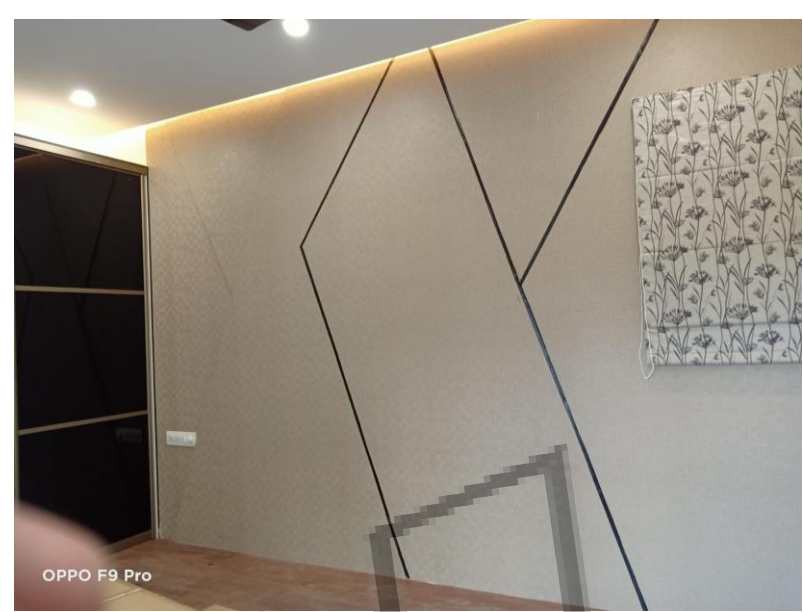


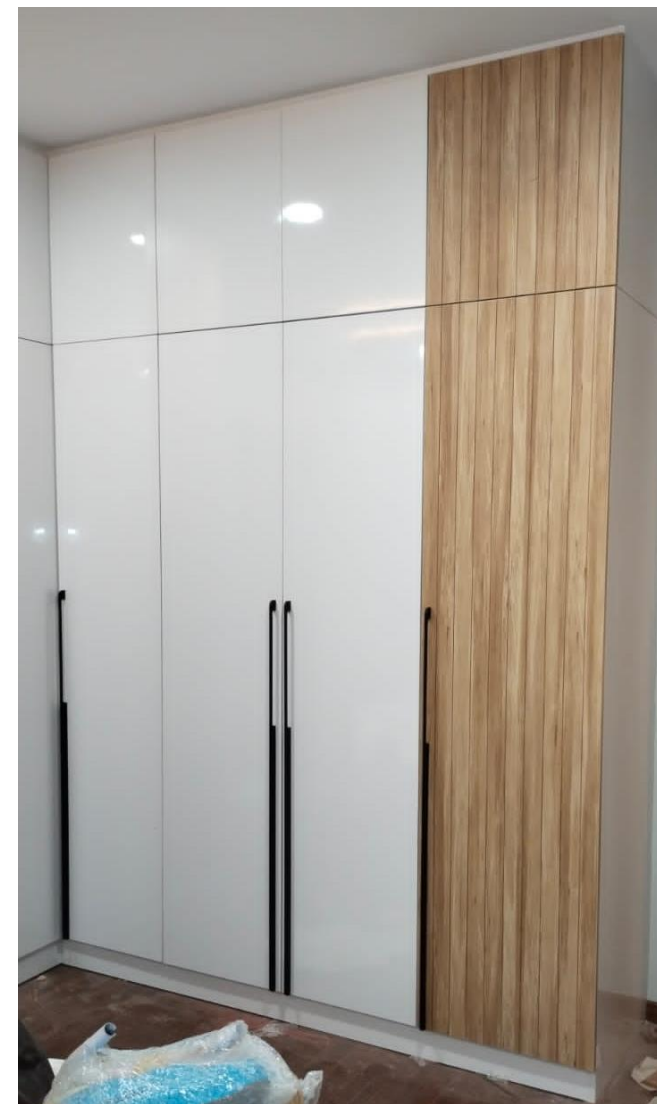


Real time pictures

- Here are few of our works from our previous projects








Contact us:



Factory & Office: Ramesh Sharma

CD 89, Biderhalli Hobli,
Byrathi, Kothnur Post,
Bangalore – 560077

 9880652548

 sharmaramesh884@gmail.com

style vista